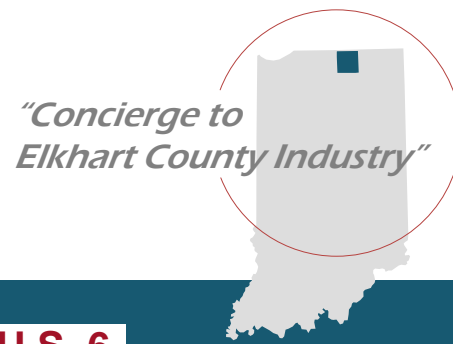




EDC of Elkhart County, Indiana

102 W. Lincoln Ave., Suite 210
Goshen, IN 46526
Toll-free 877-535-1002, Phone 574-535-1002
Fax 574-535-1022
www.elkhartcountybiz.com



East Side Industrial Park, CR 9 and U.S. 6

Incentives for expansion and relocation...

EDC of Elkhart County
Dorinda Heiden-Guss
edc@elkhartcountybiz.com

- Navigation through the local and state incentives process.
- Demographic and economic data.
- Local sourcing and local connections.

We are here to make your move a fast and pleasant experience.

Land for Sale Nappanee, IN 66 Acres

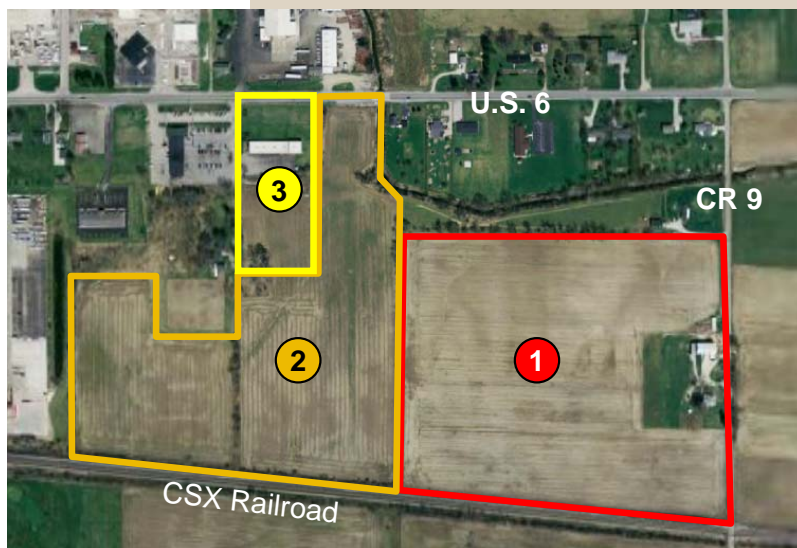
Call for Prices



Property and cost information...

Owner/Developer
Parcel 1 - Larry Mullet
Tel: 574-354-1047

Parcels 2 & 3 - **Dwayne Borkholder**
dwayne@borkholder.com
Tel: 574-773-3144 or 574-773-4083 Cell: 574-320-3561



Parcel 1 - 29.84 Acres
Parcel 2 - 24.5 Acres
Parcel 3 - 10.5 Acres

9,000 SF Block Building
located on Parcel 3

Rail

Proximity to markets:

South Bend: 36 miles
Grand Rapids: 121 miles
Chicago: 111 miles
Indianapolis: 159 miles
Cleveland: 255 miles
I-80/I-90: 287 miles
I-69: 50 miles
I-65: 83 miles



Zoning:
M-2 General Manufacturing

Utilities:
Electric: NIPSCO
Gas: NIPSCO
Water: City of Nappanee
Sewer: City of Nappanee